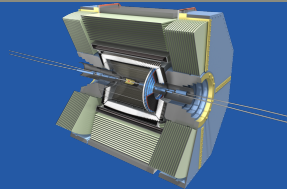
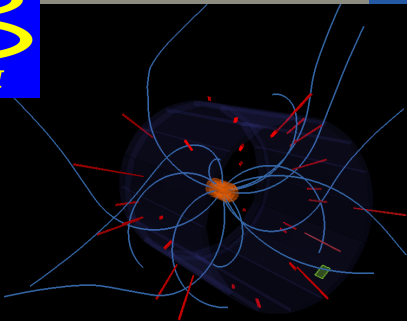




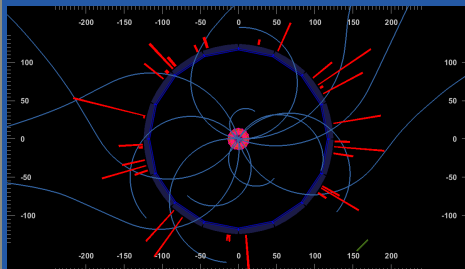
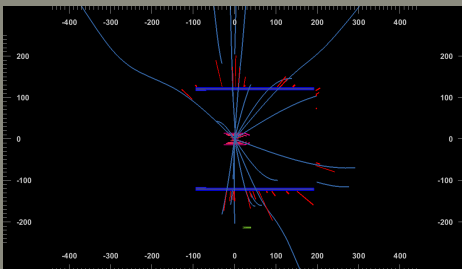
Belle II



Ereignis 1

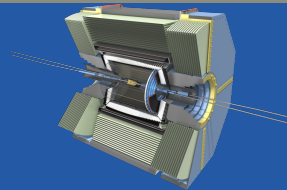
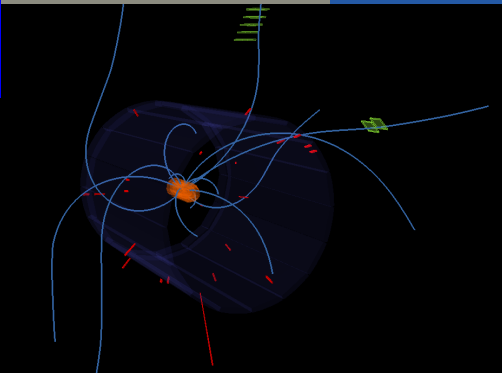
$$E = 4.6$$

$$\sqrt{s} = 0.06$$





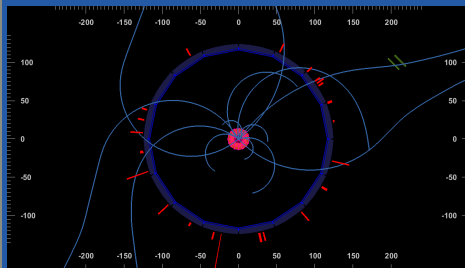
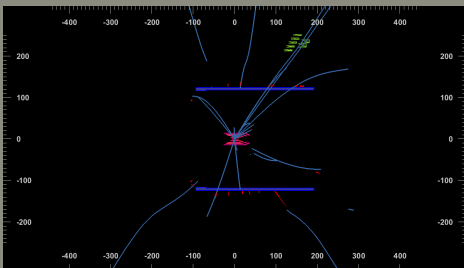
Belle II



Ereignis 2

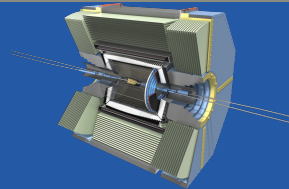
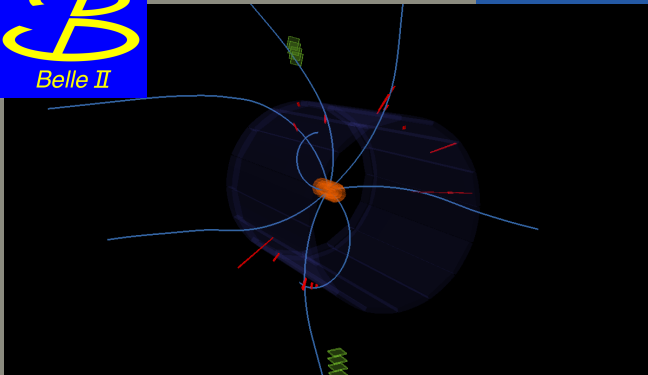
$$\mathcal{E} = 0.8$$

$$\angle = 0.10$$





Belle II



Ereignis 3

$$\cancel{E} = -0.4$$

$$\swarrow = 0.15$$

