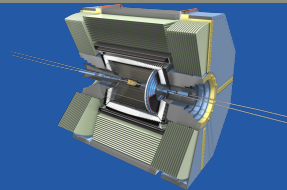
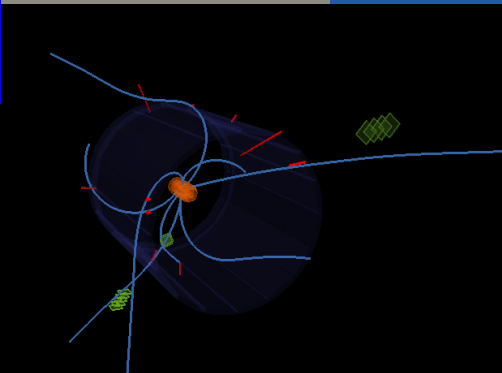




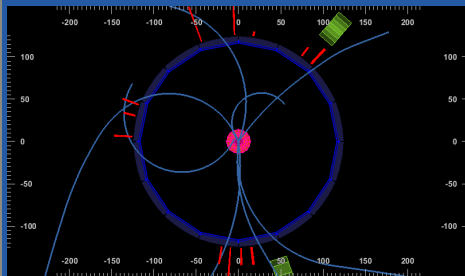
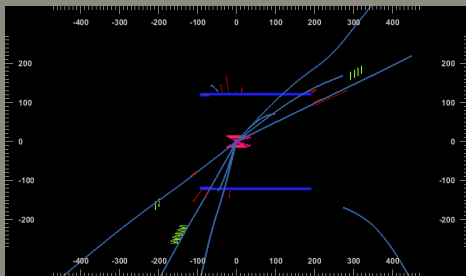
Belle II

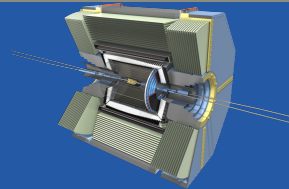
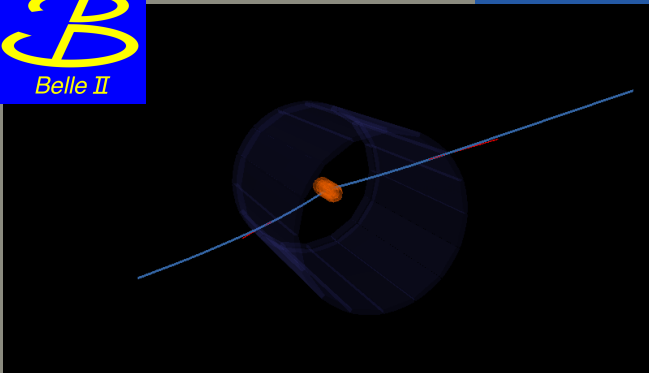


Ereignis 1

$$\cancel{E} = -0.0$$

$$\cancel{\eta} = 0.61$$

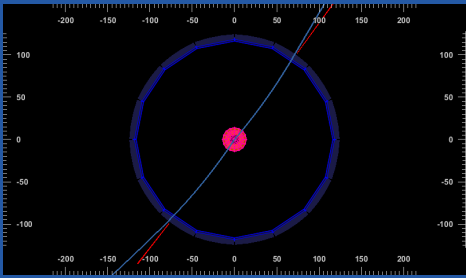
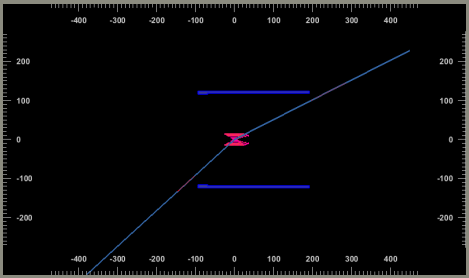




Ereignis 2

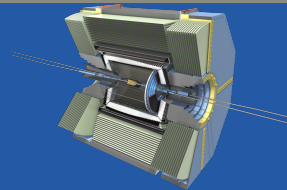
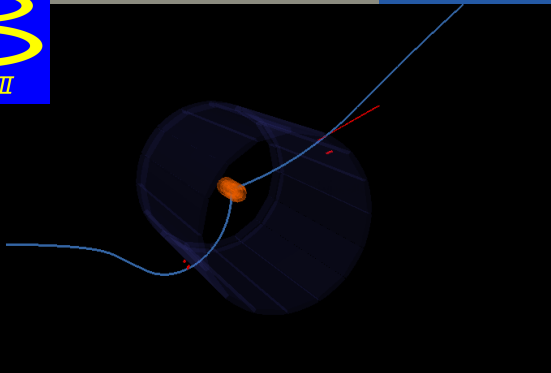
$\cancel{E} = 0.0$

$\swarrow = 1.0$





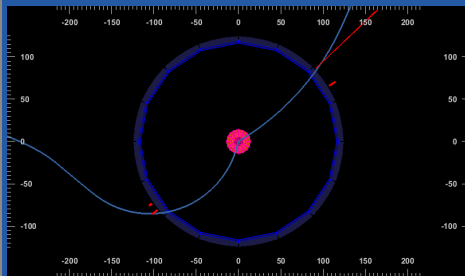
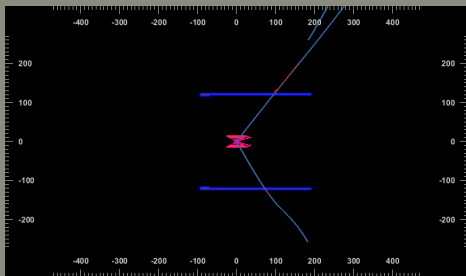
Belle II



Ereignis 3

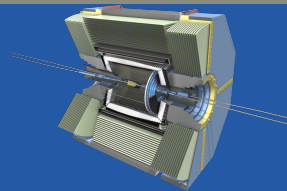
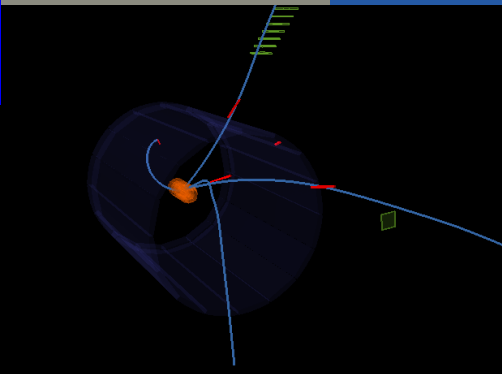
$$\cancel{E} = 68.5$$

$$\cancel{\nu} = 0.59$$





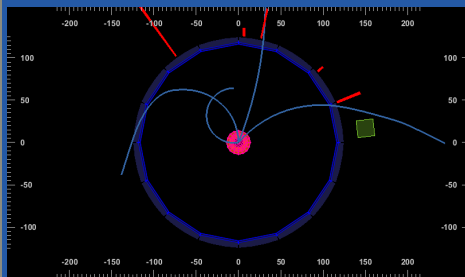
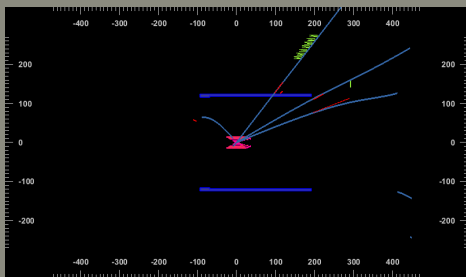
Belle II



Ereignis 4

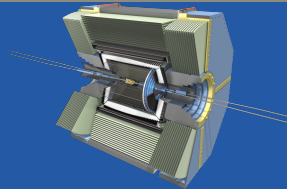
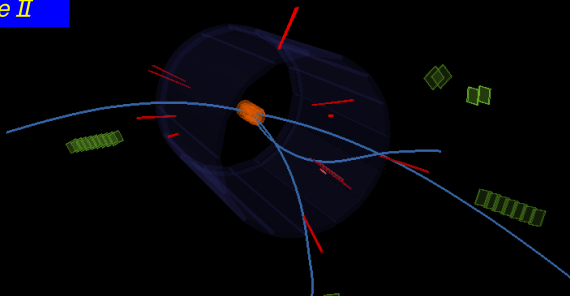
$$E = 31.1$$

$$\theta = 0.68$$





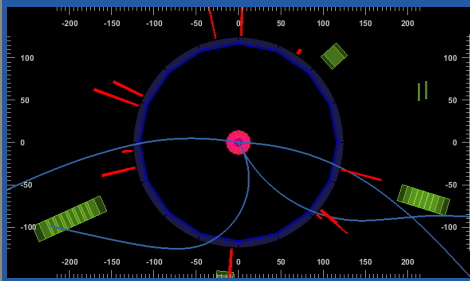
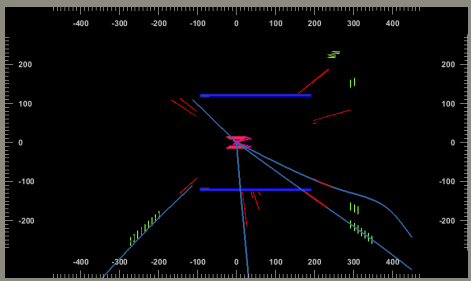
Belle II



Ereignis 5

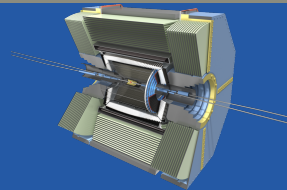
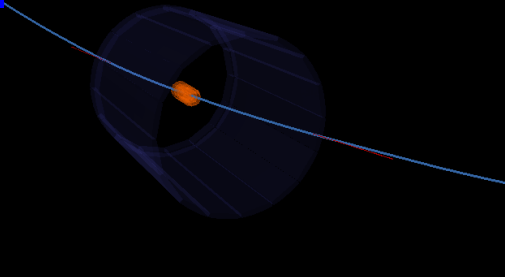
$$\cancel{E} = 12.2$$

$$\cancel{\eta} = 0.53$$





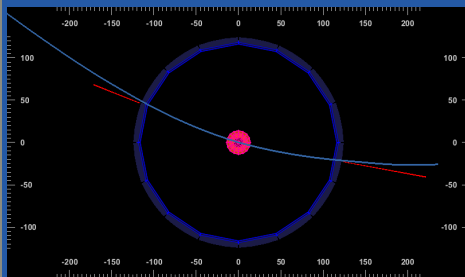
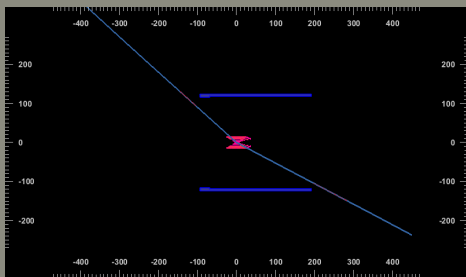
Belle II

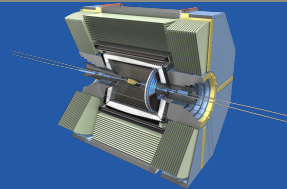
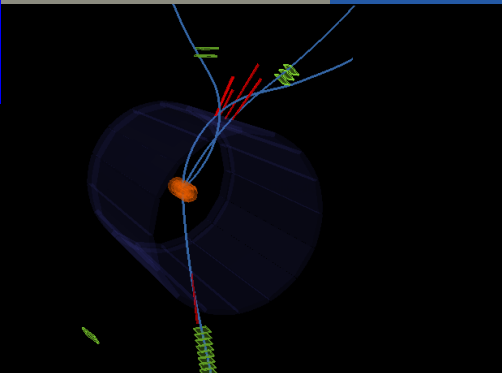


Ereignis 6

$$\cancel{E} = 0.0$$

$$\swarrow = 1.0$$

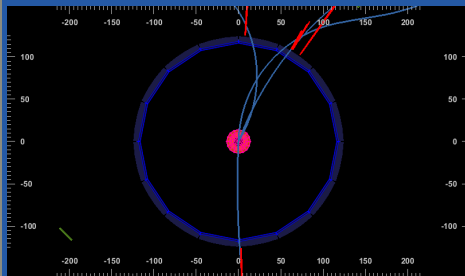
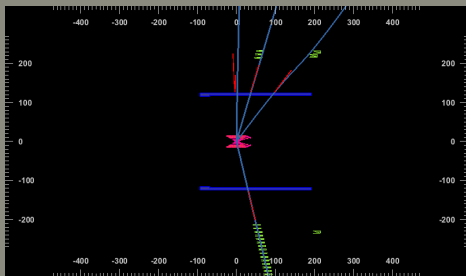




Ereignis 7

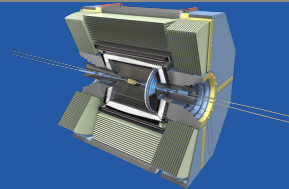
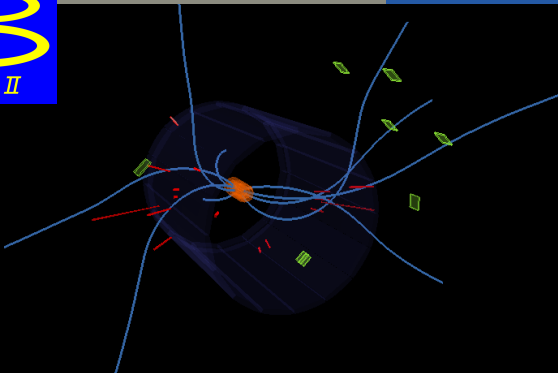
$$E = 1.8$$

$$\vec{p} = 0.87$$





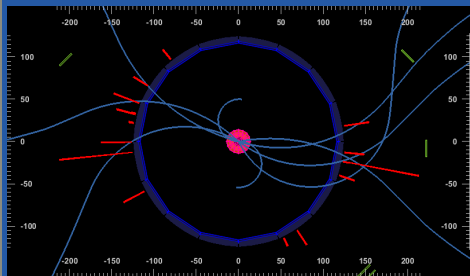
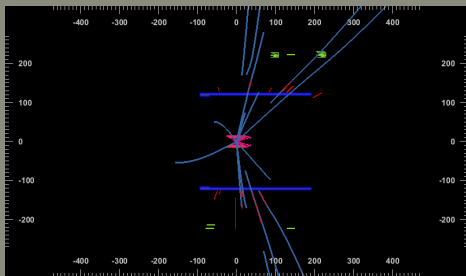
Belle II

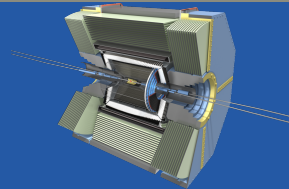
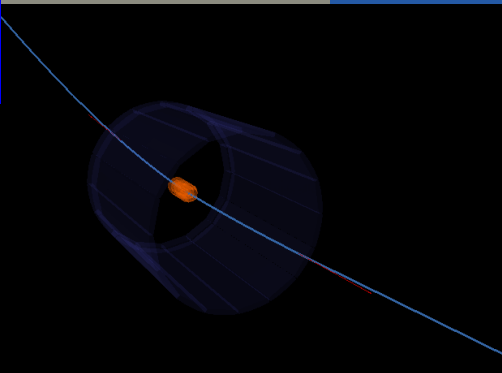


Ereignis 8

$$E = 10.1$$

$$\theta = 0.35$$

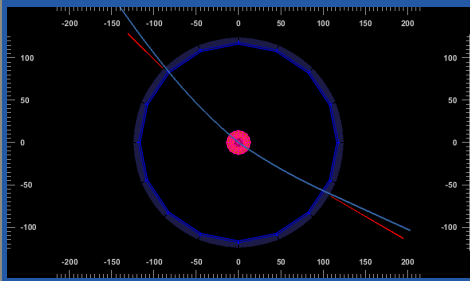
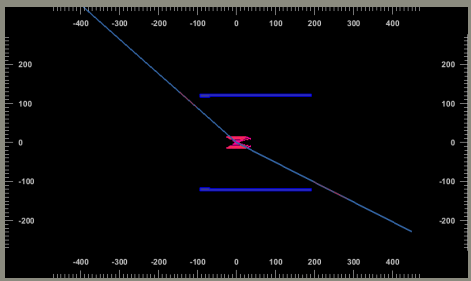


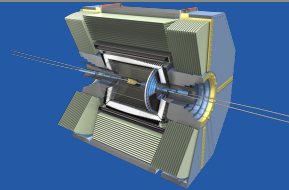
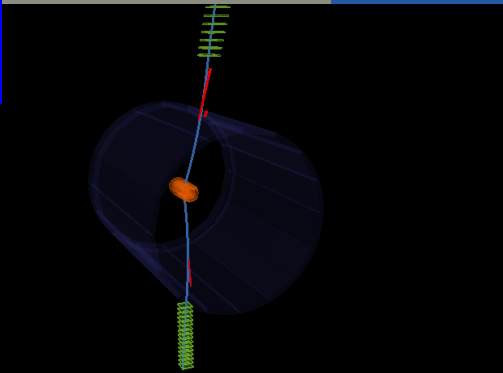


Ereignis 9

$\cancel{E} = 0.0$

$\swarrow = 1.0$

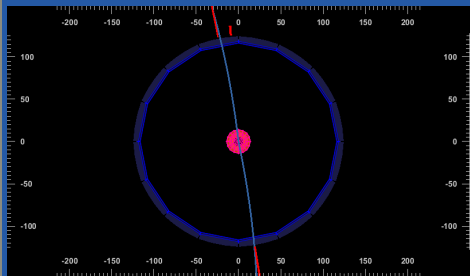
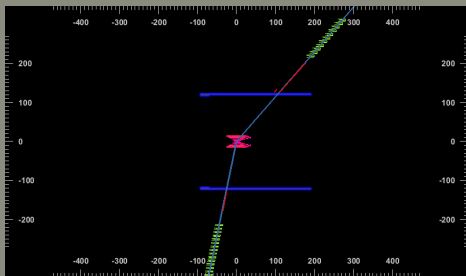




Ereignis 10

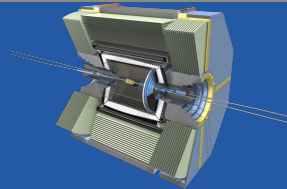
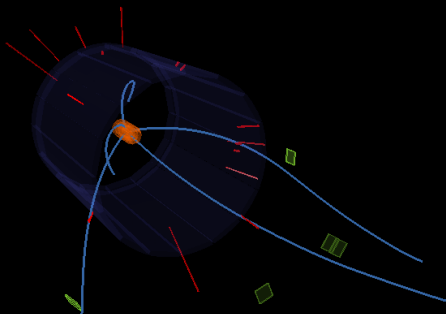
$$\cancel{E} = 0.0$$

$$\swarrow = 1.0$$





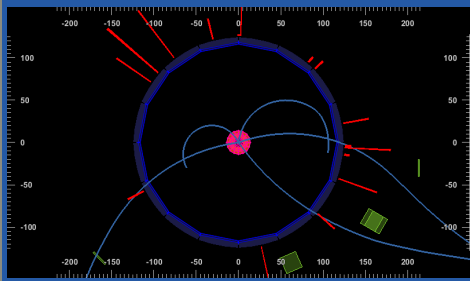
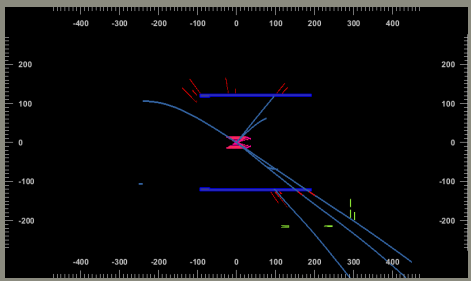
Belle II



Ereignis 11

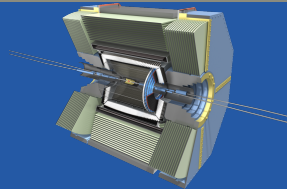
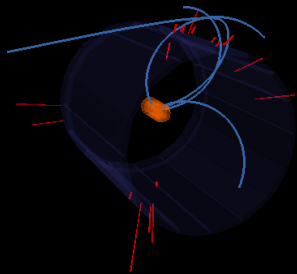
$$\cancel{E} = -0.6$$

$$\vec{\cancel{g}} = 0.21$$





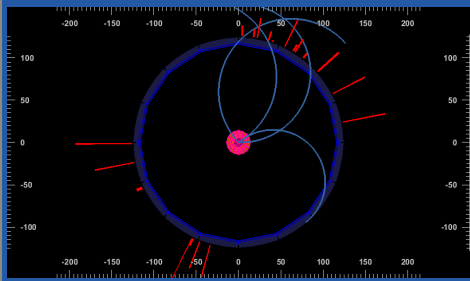
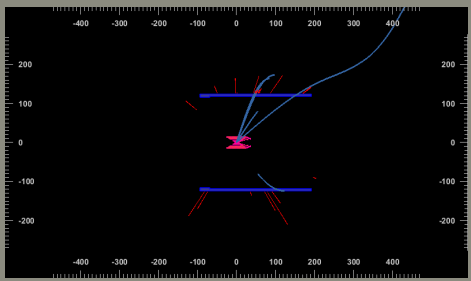
Belle II



Ereignis 12

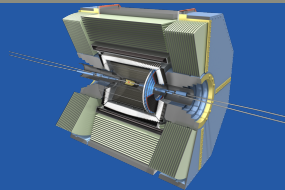
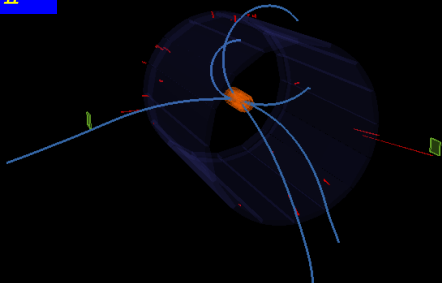
$$E = 2.2$$

$$\theta = 0.17$$





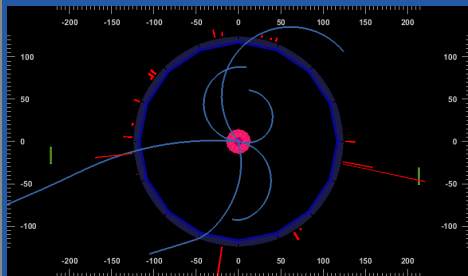
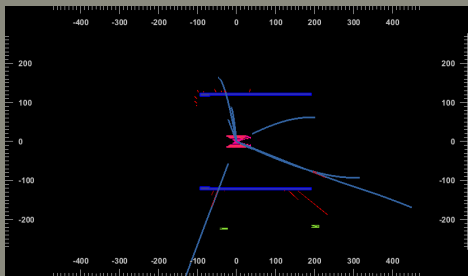
Belle II

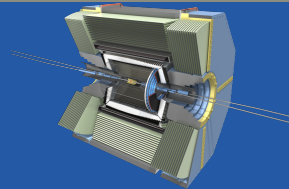
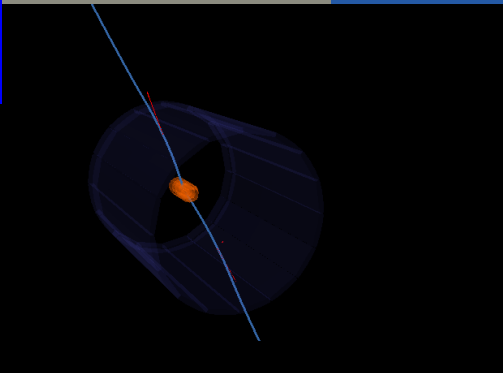


Ereignis 13

$$\cancel{E} = 0.3$$

$$\cancel{\nu} = 0.51$$

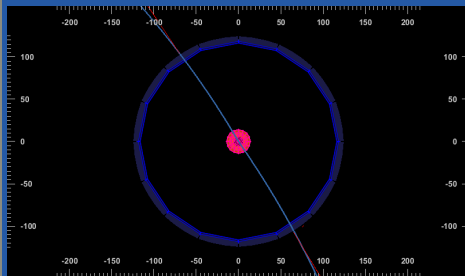
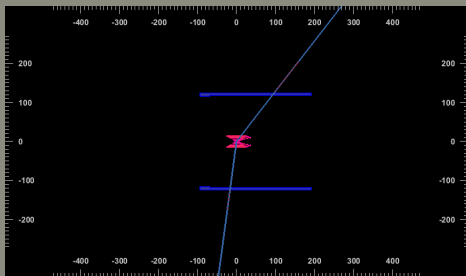




Ereignis 14

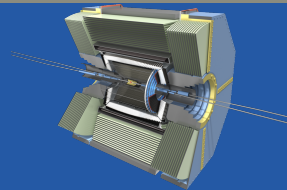
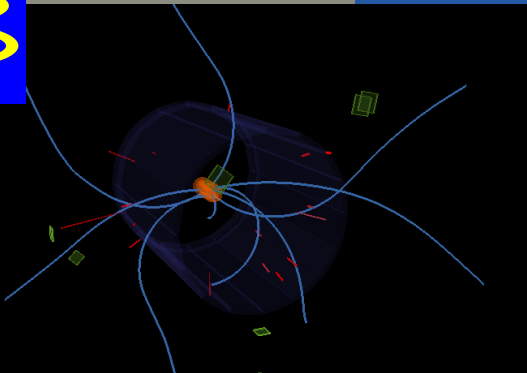
$$E = -0.0$$

$$\theta = 1.0$$





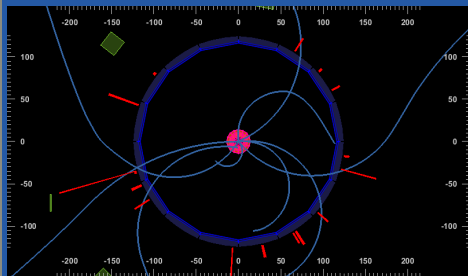
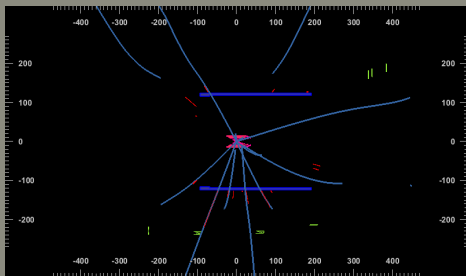
Belle II

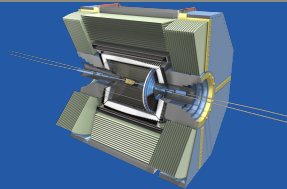
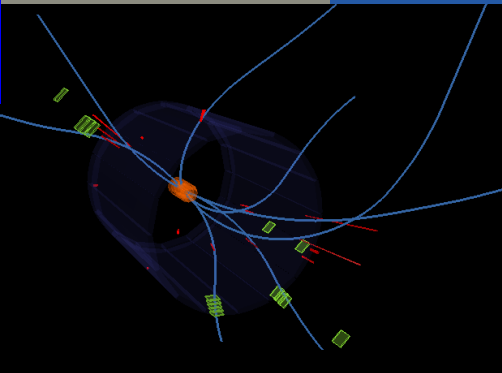


Ereignis 15

$$E = 14.4$$

$$\theta = 0.11$$

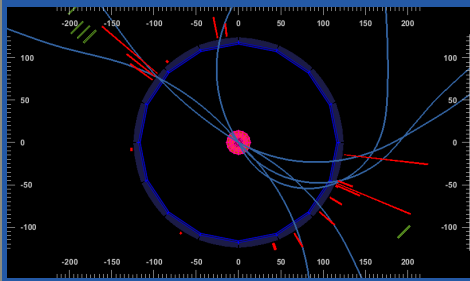
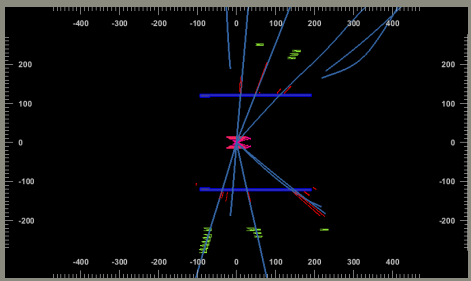




Ereignis 16

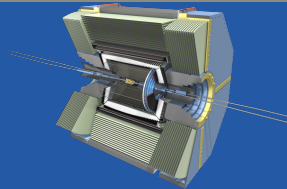
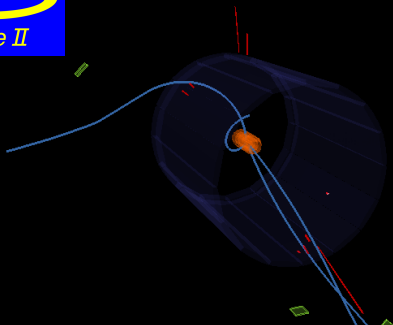
$E = -0.1$

$\vec{\eta} = 0.51$





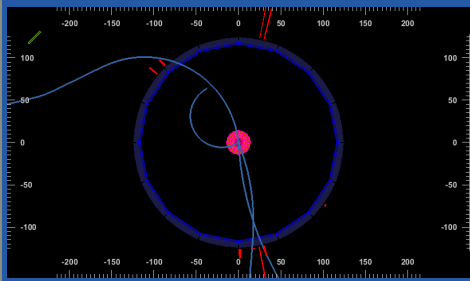
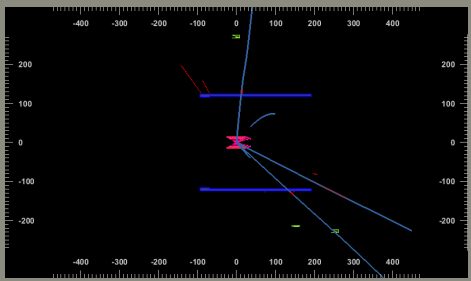
Belle II

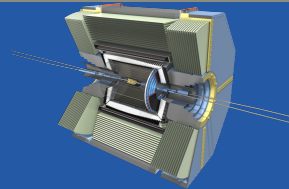
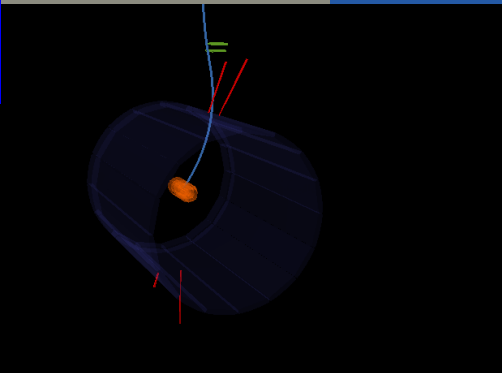


Ereignis 17

$$E = 6.6$$

$$\vec{p} = 0.75$$

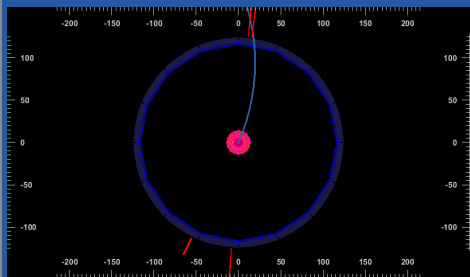
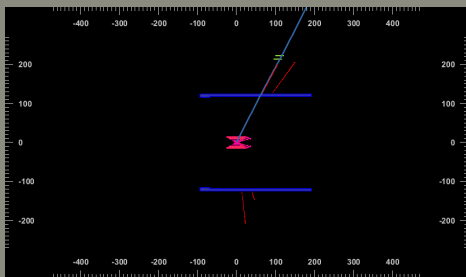




Ereignis 18

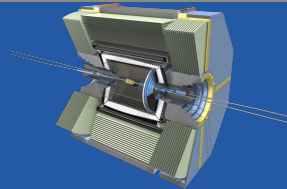
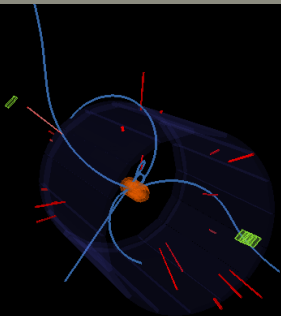
$$E = 64.5$$

$$\cos\theta = 0.91$$





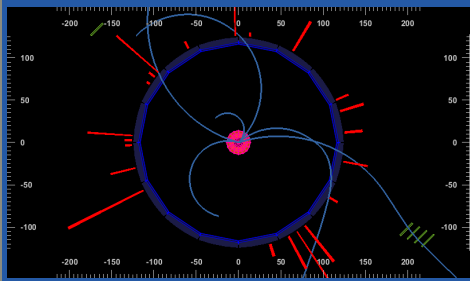
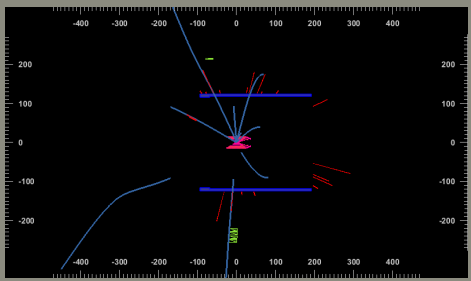
Belle II

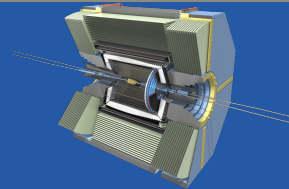
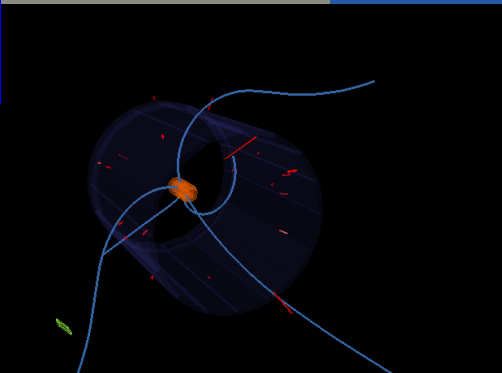


Ereignis 19

$$E = 30.1$$

$$\theta = 0.07$$

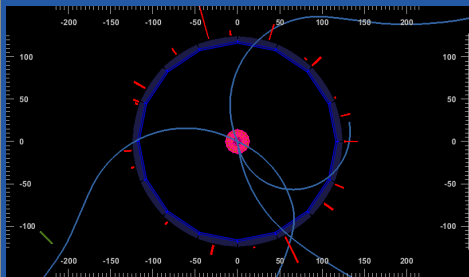
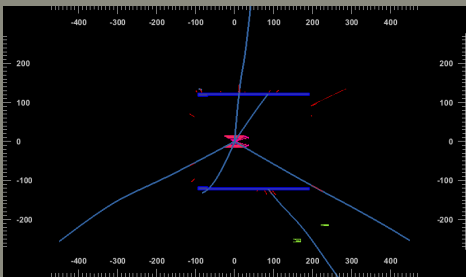


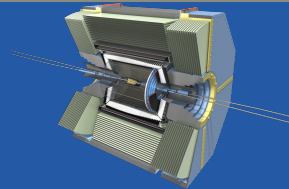
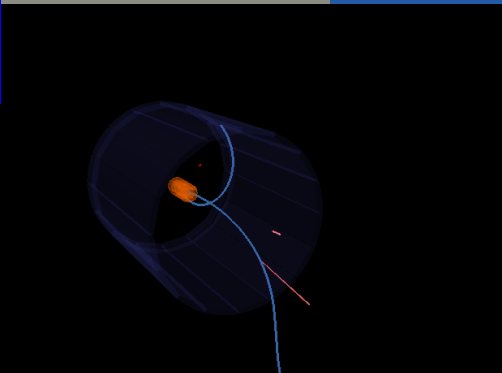


Ereignis 20

$E = 8.8$

$\theta = 0.09$

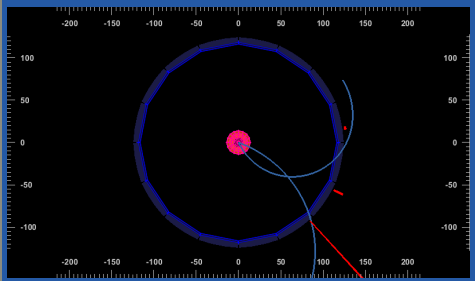
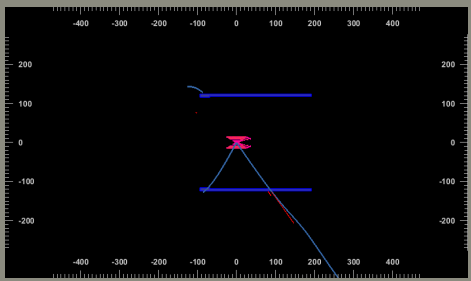




Ereignis 21

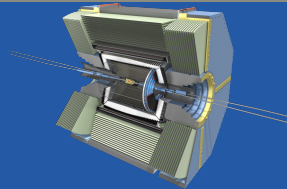
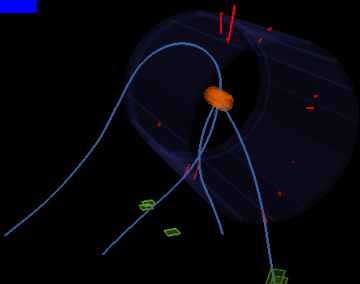
$E = 88.0$

$\theta = 0.34$





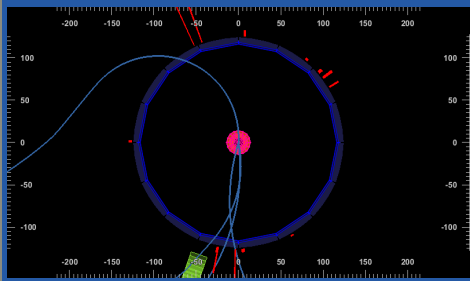
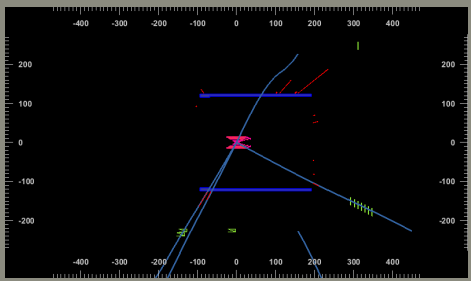
Belle II



Ereignis 22

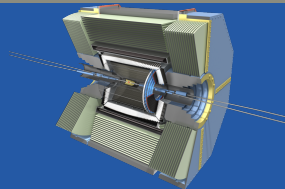
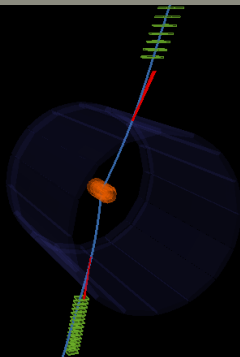
$$E = 19.5$$

$$\theta = 0.38$$





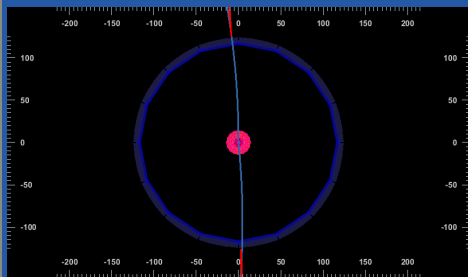
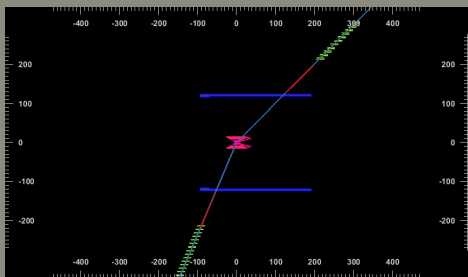
Belle II



Ereignis 23

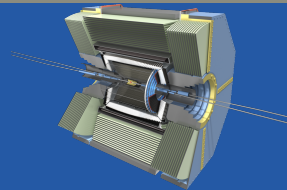
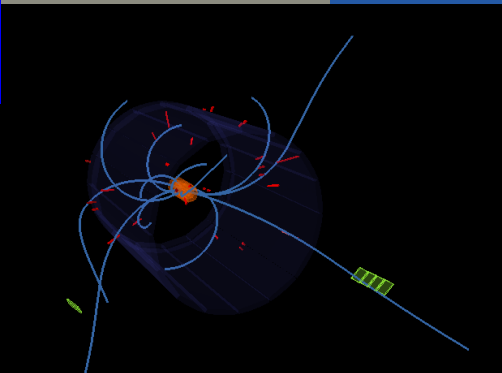
$$\cancel{E} = -0.1$$

$$\swarrow = 1.0$$





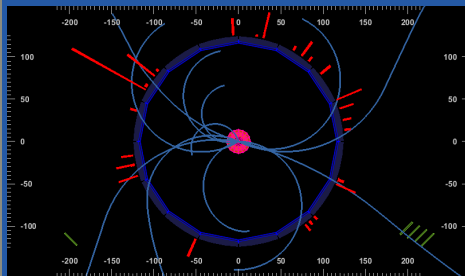
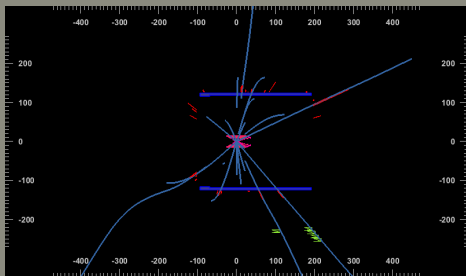
Belle II



Ereignis 24

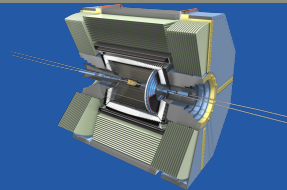
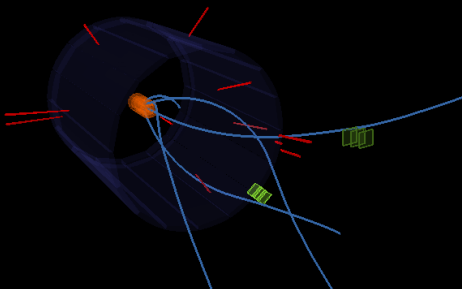
$$\cancel{E} = -0.1$$

$$\cancel{\vec{g}} = 0.18$$





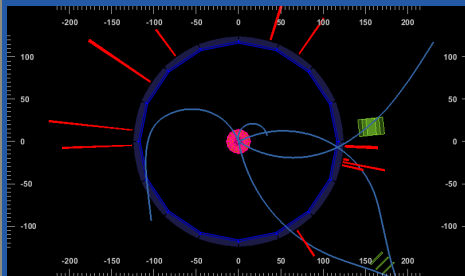
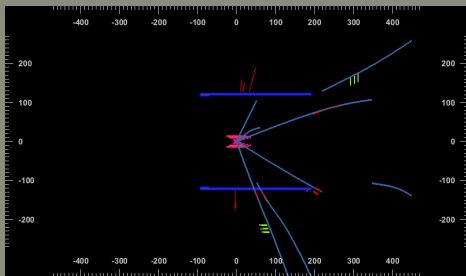
Belle II



Ereignis 25

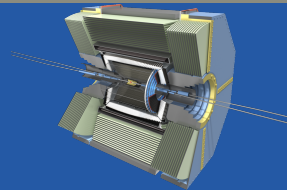
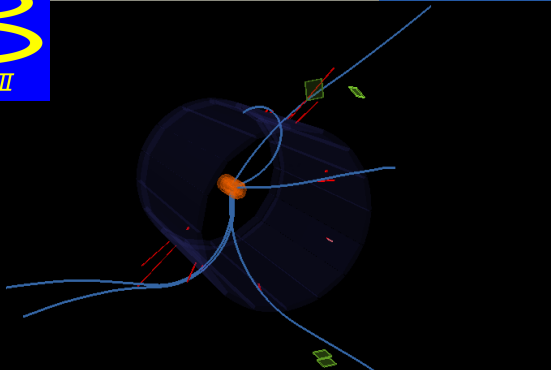
$$E = 36.1$$

$$\theta = 0.05$$





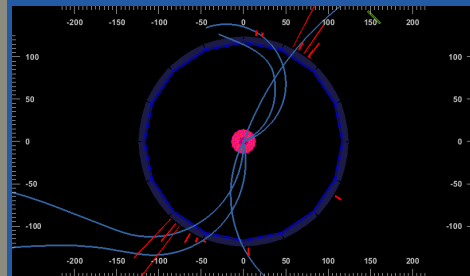
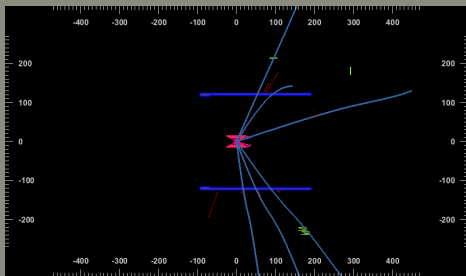
Belle II



Ereignis 26

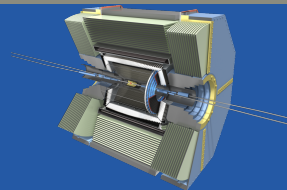
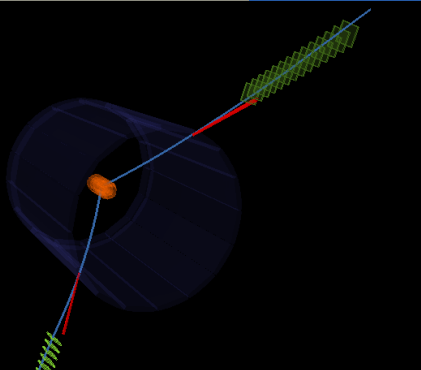
$$\cancel{E} = -0.0$$

$$\cancel{\nu} = 0.54$$





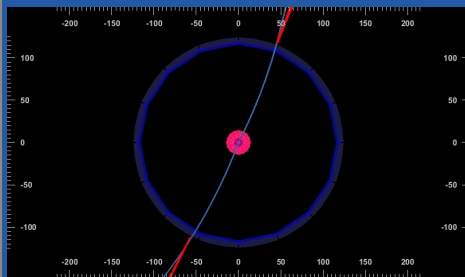
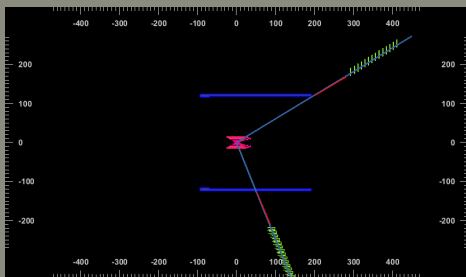
Belle II

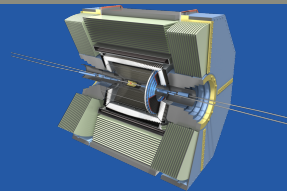
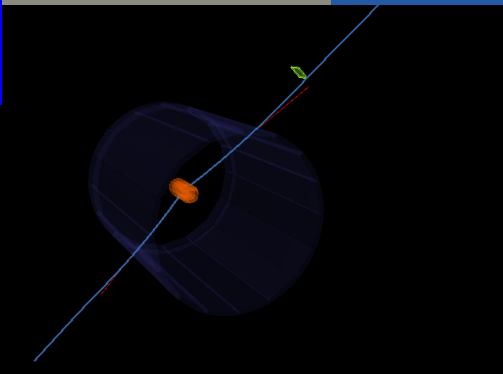


Ereignis 27

$$\cancel{E} = -0.4$$

$$\swarrow = 0.5$$

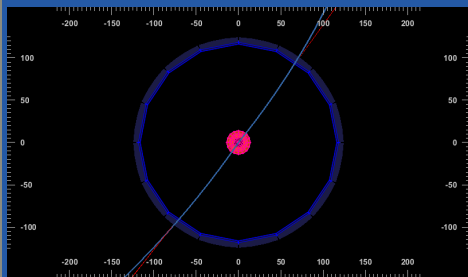
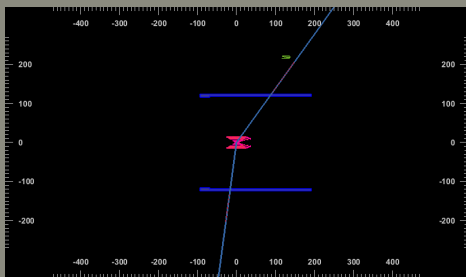


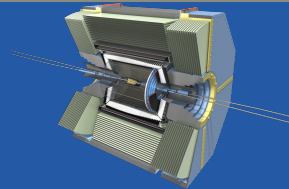
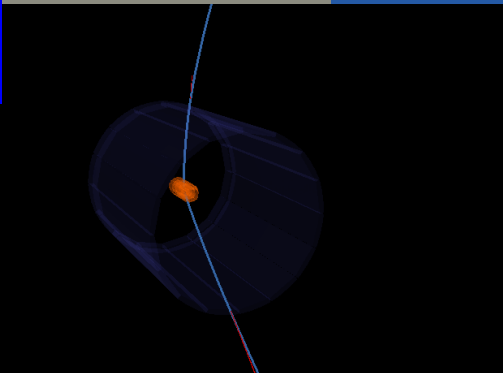


Ereignis 28

$$\mathcal{E} = 0.1$$

$$\vec{g} = 1.0$$

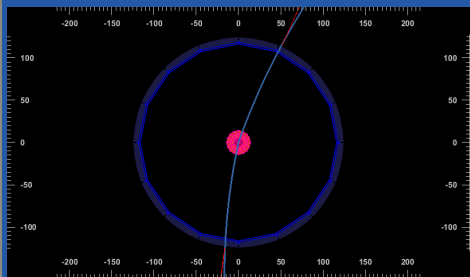
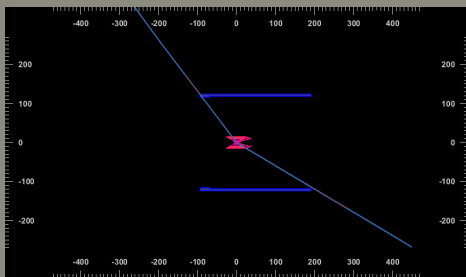




Ereignis 29

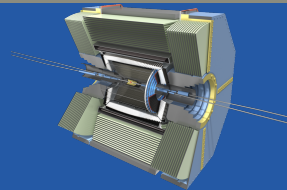
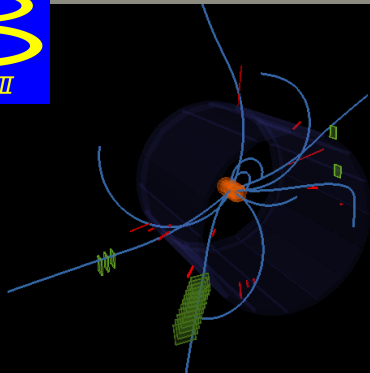
$$\cancel{E} = -0.0$$

$$\swarrow = 1.0$$





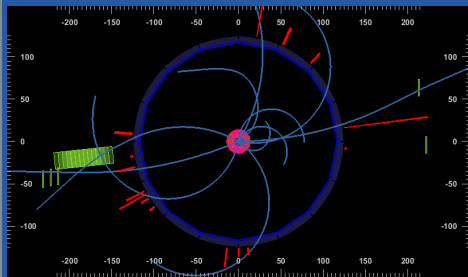
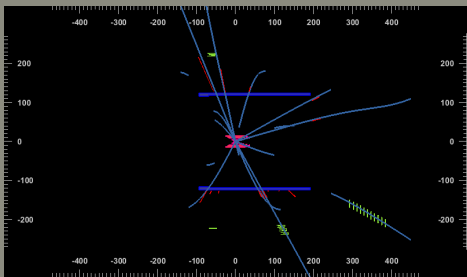
Belle II



Ereignis 30

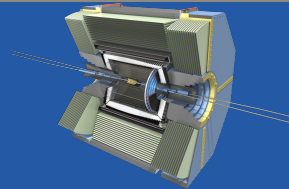
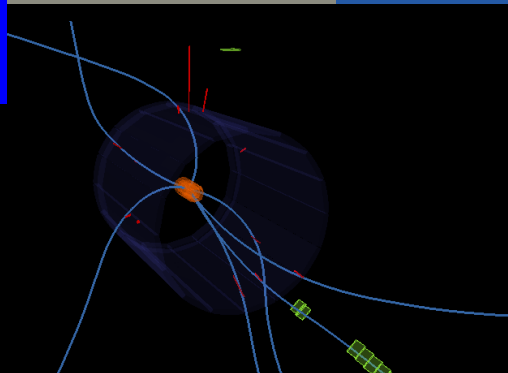
$$E = 1.5$$

$$\vec{g} = 0.28$$





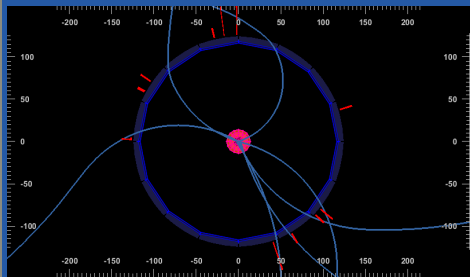
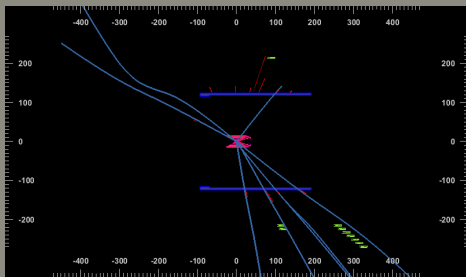
Belle II

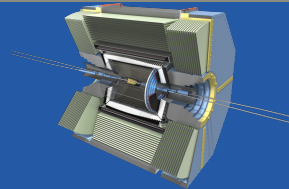
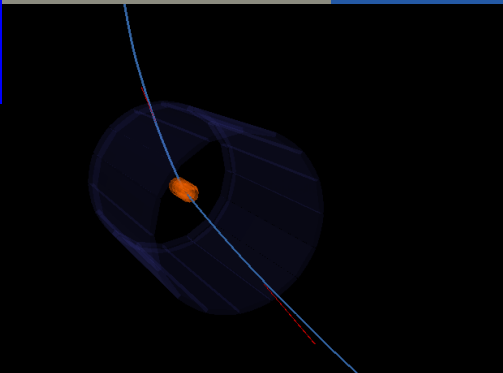


Ereignis 31

$$E = 19.9$$

$$\theta = 0.17$$

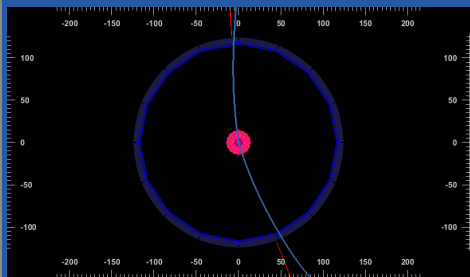
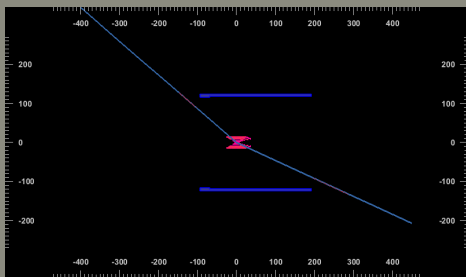




Ereignis 32

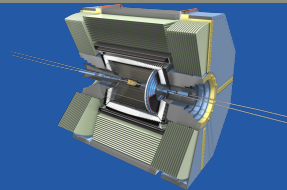
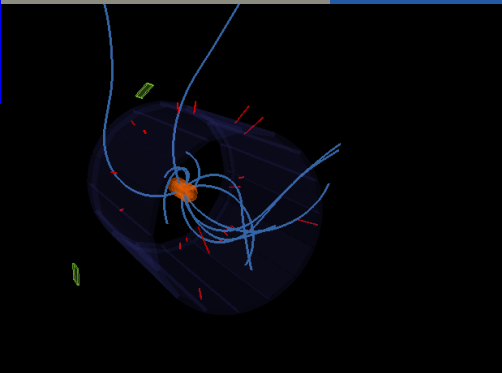
$$\cancel{E} = -0.5$$

$$\swarrow = 1.0$$





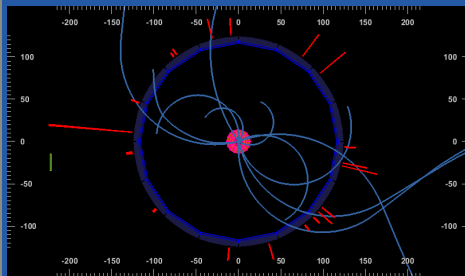
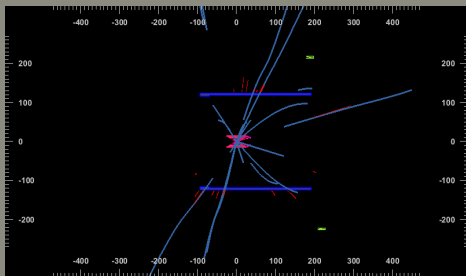
Belle II

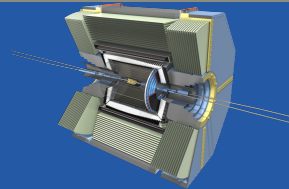
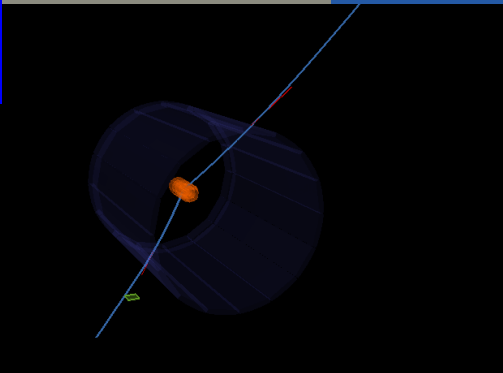


Ereignis 33

$$\cancel{E} = 4.8$$

$$\swarrow = 0.12$$

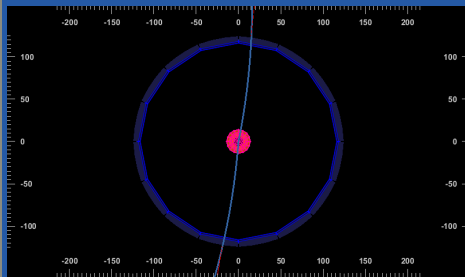
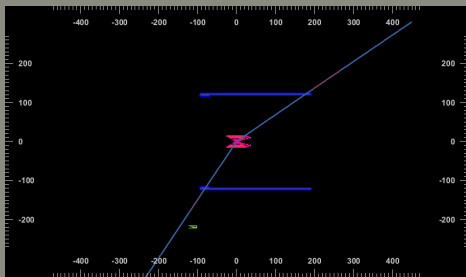




Ereignis 34

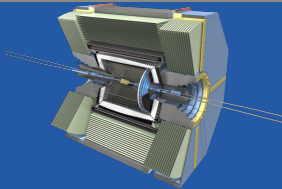
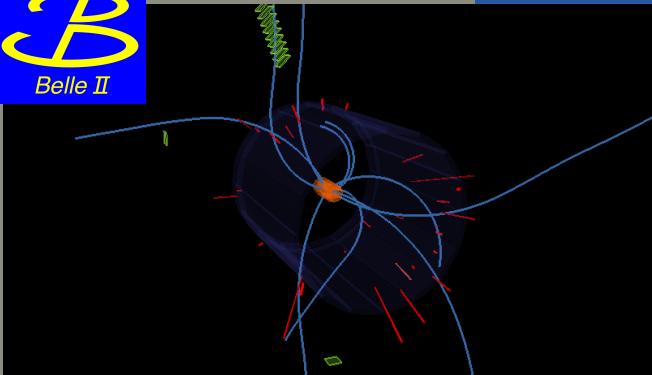
$$\cancel{E} = 0.0$$

$$\cancel{\nu} = 1.0$$





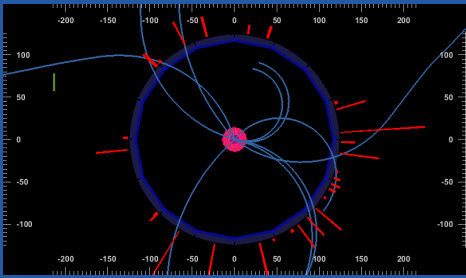
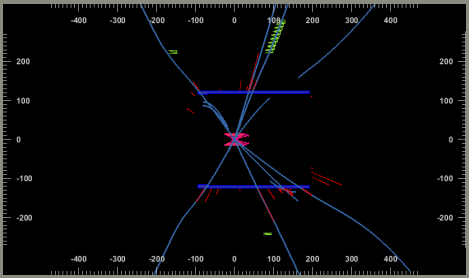
Belle II

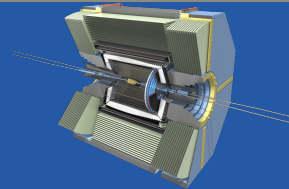
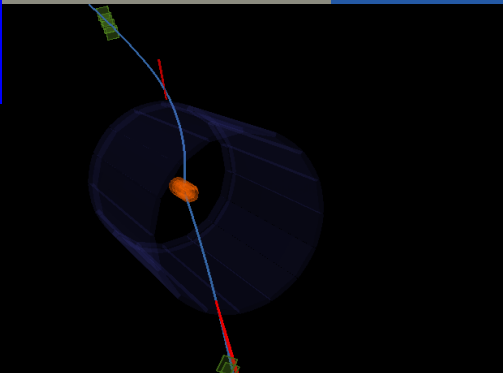


Ereignis 35

$$E = 0.2$$

$$\vec{p} = 0.09$$

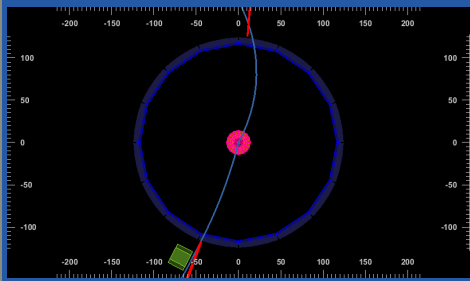
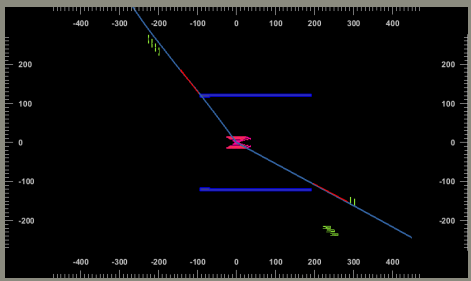




Ereignis 36

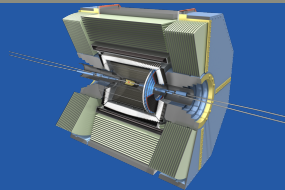
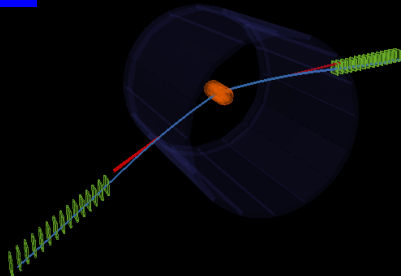
$E = 16.6$

$\theta = 1.0$





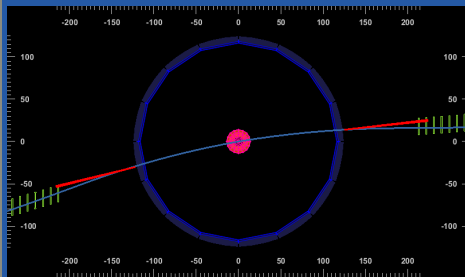
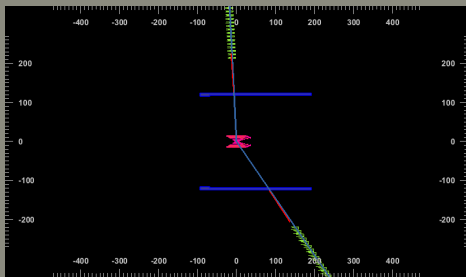
Belle II



Ereignis 37

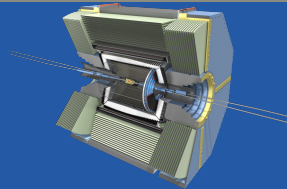
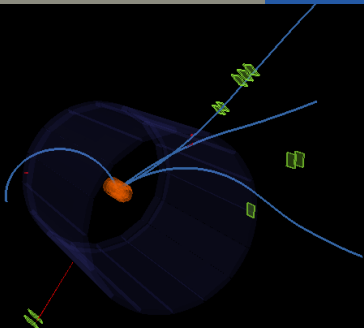
$$\cancel{E} = -0.0$$

$$\swarrow = 1.0$$





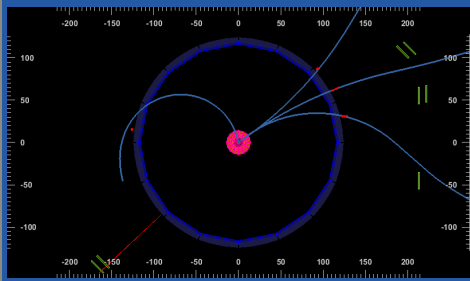
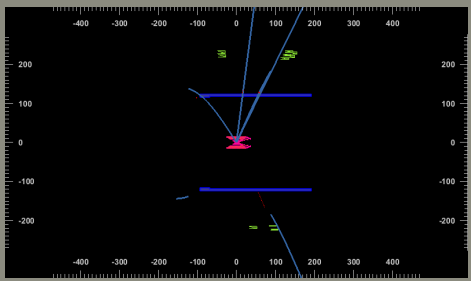
Belle II

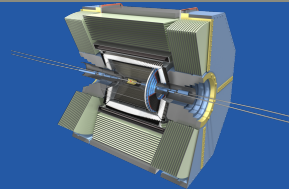
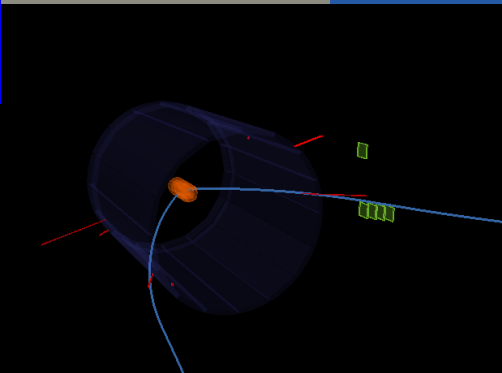


Ereignis 38

$$\cancel{E} = 0.7$$

$$\cancel{\theta} = 0.79$$

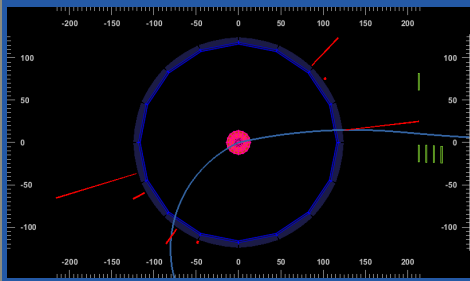
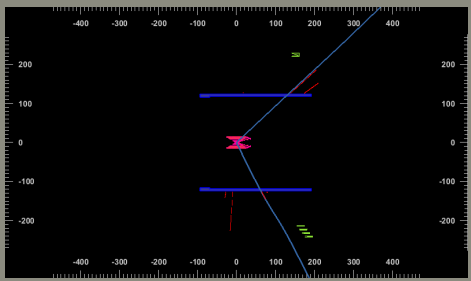




Ereignis 39

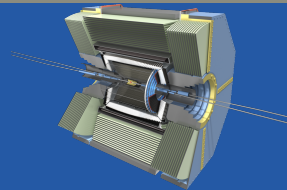
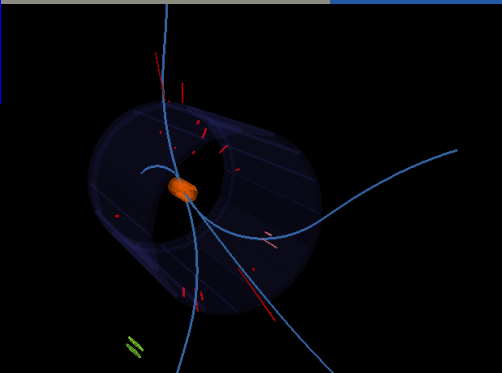
$E = 14.2$

$\theta = 0.76$





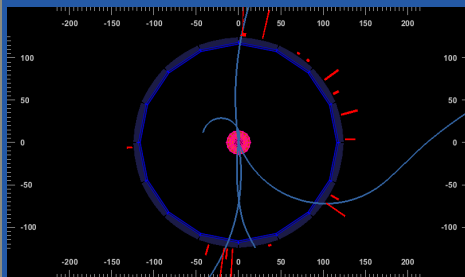
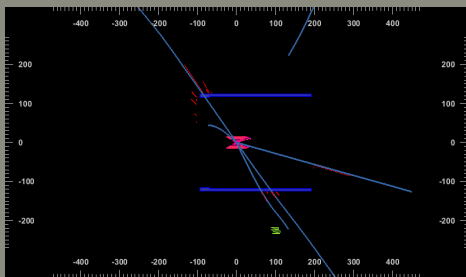
Belle II



Ereignis 40

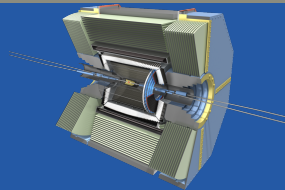
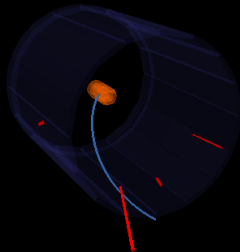
$$E = 10.9$$

$$\vec{\mu} = 0.51$$





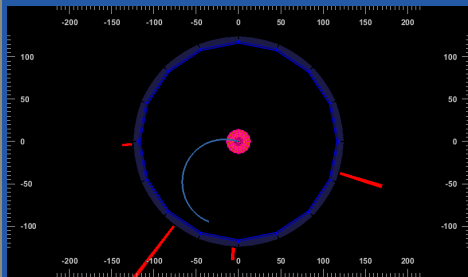
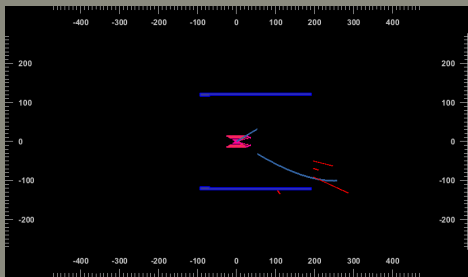
Belle II



Ereignis 41

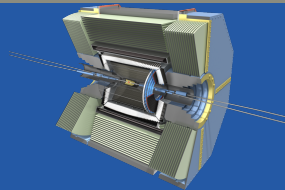
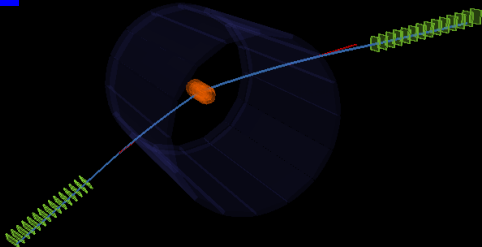
$$\cancel{E} = 103.8$$

$$\cancel{\theta} = 1.0$$





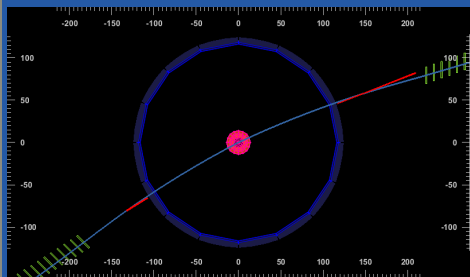
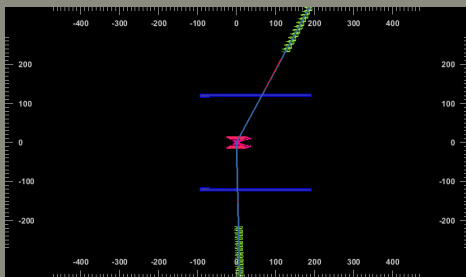
Belle II



Ereignis 42

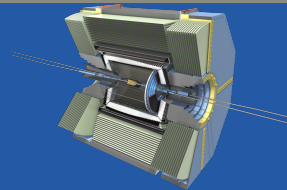
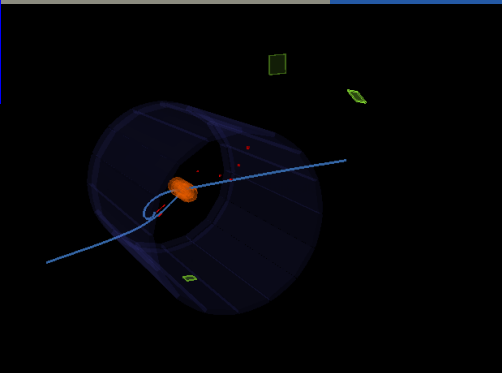
$$E = -0.0$$

$$\theta = 1.0$$





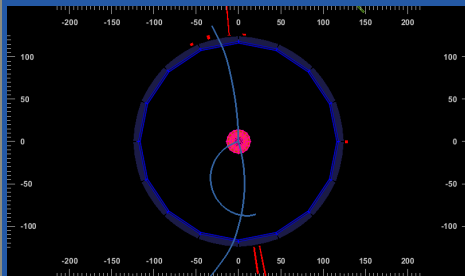
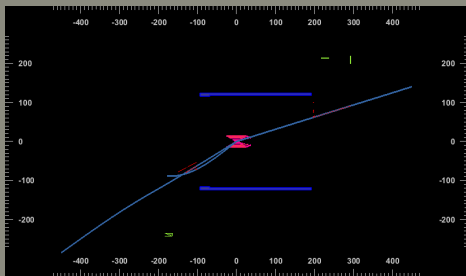
Belle II



Ereignis 43

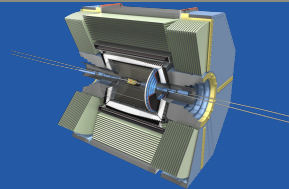
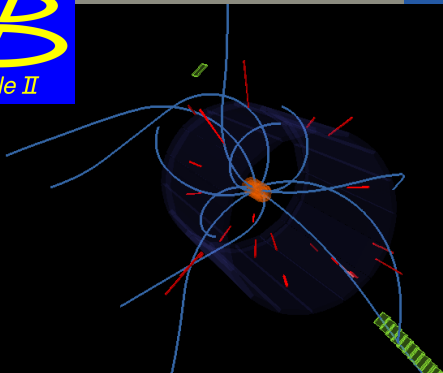
$$E = 57.4$$

$$\theta = 0.82$$





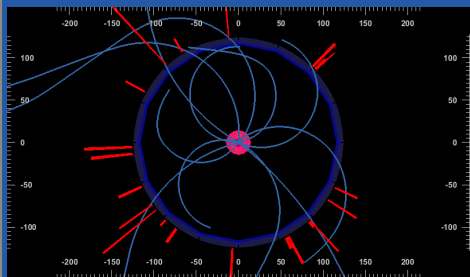
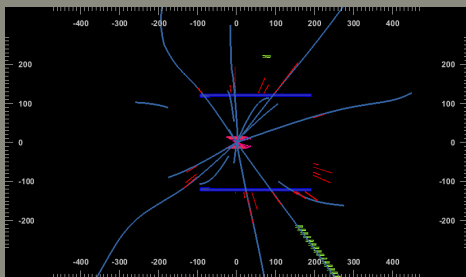
Belle II



Ereignis 44

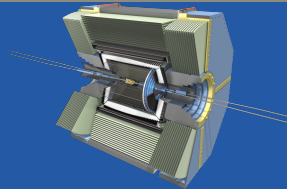
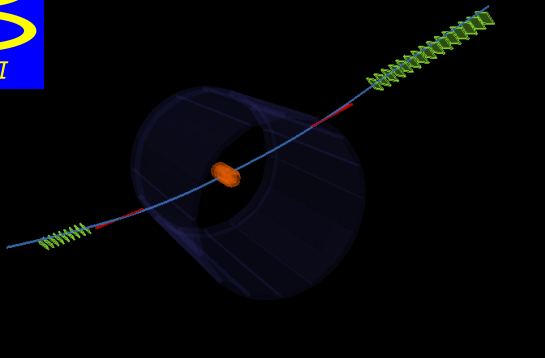
$$\mathcal{E} = 1.4$$

$$\theta = 0.09$$





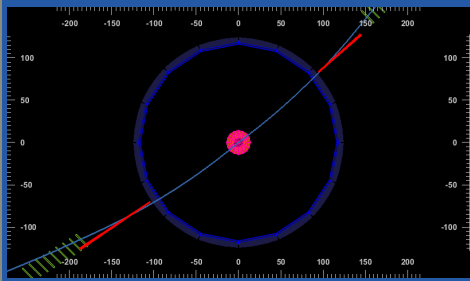
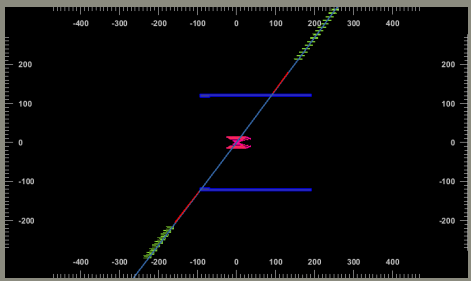
Belle II

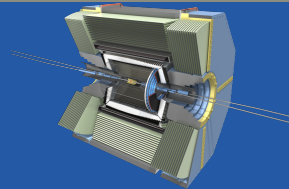
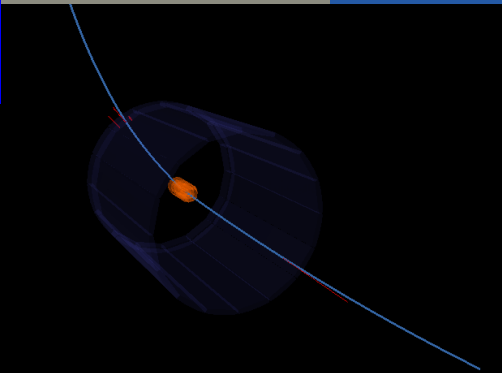


Ereignis 45

$$\cancel{E} = -0.3$$

$$\cancel{p}_z = 0.88$$

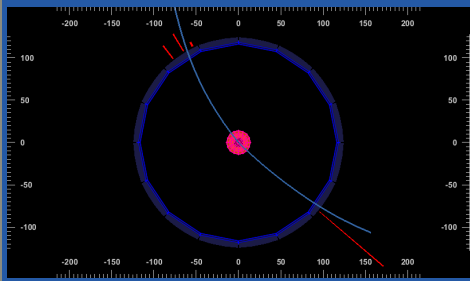
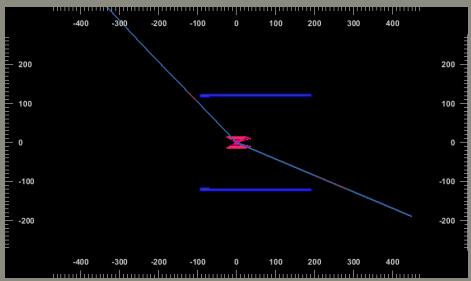




Ereignis 46

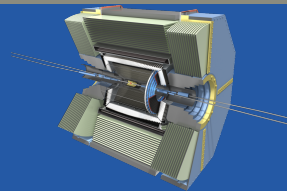
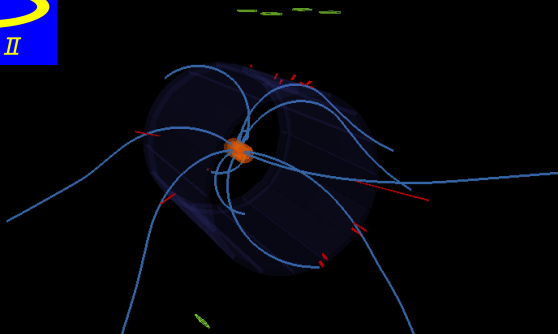
$\mathcal{E} = -0.5$

$\vec{\eta} = 0.98$





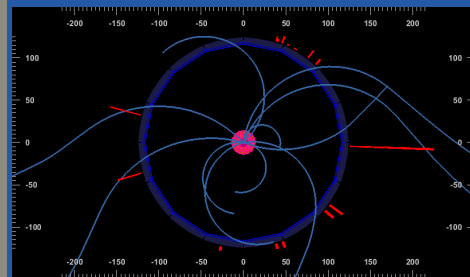
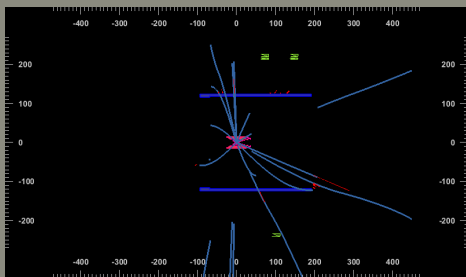
Belle II



Ereignis 47

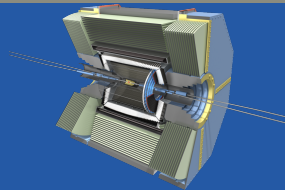
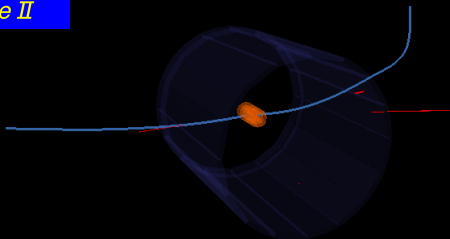
$$\mathcal{E} = 17.0$$

$$\vec{\alpha} = 0.08$$





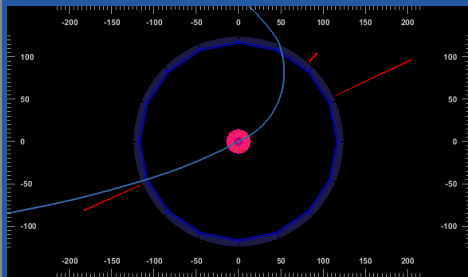
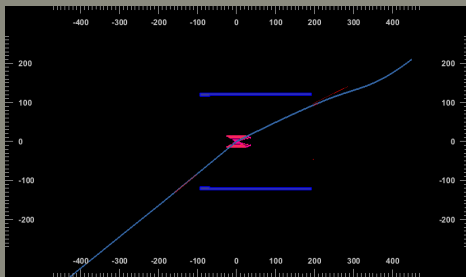
Belle II



Ereignis 48

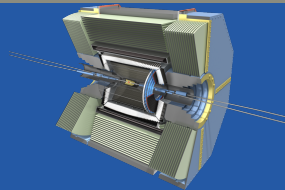
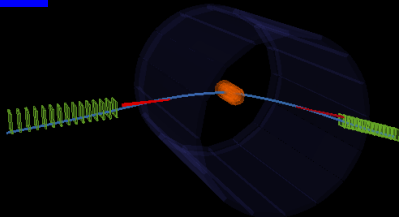
$$\cancel{E} = 0.0$$

$$\swarrow = 1.0$$



B

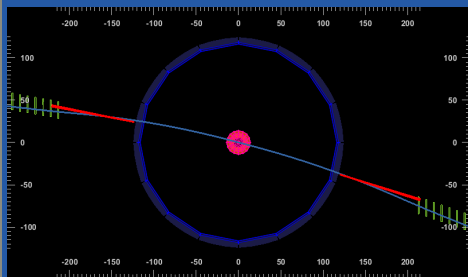
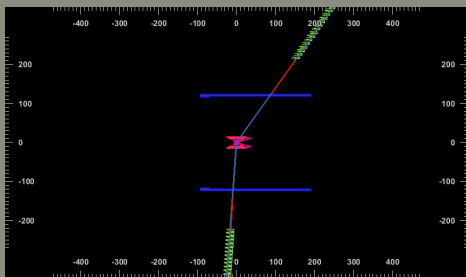
Belle II

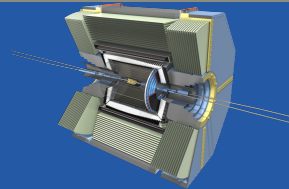
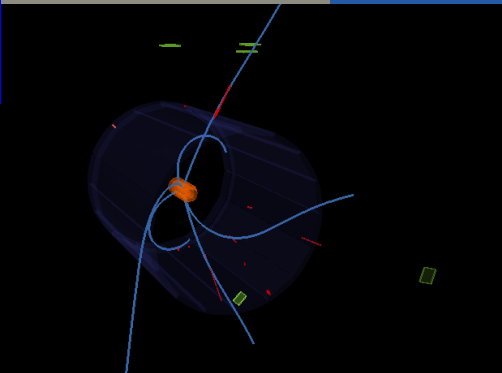


Ereignis 49

$$\cancel{E} = 0.0$$

$$\swarrow = 1.0$$





Ereignis 50
 $\mathcal{E} = 0.2$
 $\theta = 0.59$

